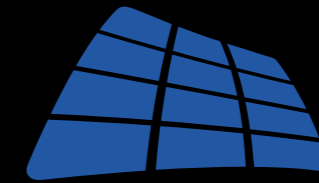


www.symtechsolar.com



symtechsolar
HELPING YOU HARVEST CLEAN ENERGY



MASTERS OF THE PV KIT



About Symtech Solar

Symtech Solar is a renewable energy company that delivers unique and complete solar energy products and solutions. With its first office in San Francisco, CA, Symtech focuses on pre-engineering and design of PV kits and systems. We take the headache out of solar for those who wish to simplify their solar energy experience.

Committed to technical design, engineering, and sourcing Symtech Solar Group strategically located its company headquarters in Shanghai CN allowing it to have a more competitive and efficient manufacturing platform for both production and design.

Symtech's expertise enables our distribution partners to receive pre-configured renewable energy systems by providing "tailor made" solution packages. Delivered with an innovative "all in one" packaging design, STS Kits offer a unique solution for the solar energy installer.

Product dimensions and physical appearance in this catalog are nominal and are provided for the convenience of our customers. Symtech Solar Group reserves the right to make product changes from time to time, without prior notification, which may change the dimensions and/or physical appearance shown.

We therefore recommend this products should be consulted with a Symtech Solar sales representative before its purchase.

© 2013 Symtech Solar Group

www.symtechsolar.com

www.symtechsolar.com

TABLE OF CONTENTS

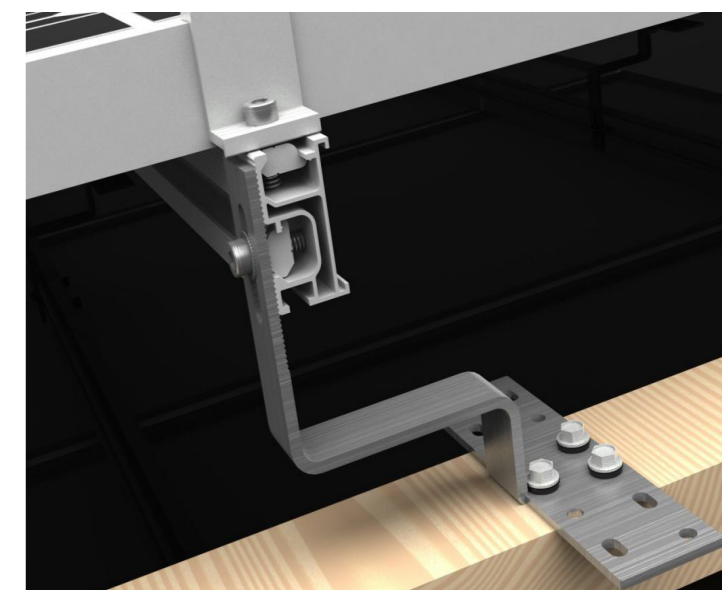
04	On-Grid	Residential PV Kits
06	On-Grid	Commercial PV Kits
08	Off-Grid	Residential PV Kits
10	Off-Grid	Micro Home PV Kits
12	Solar Water Pumping	Solar Garden Pump - Solar Jack Pump
14	Solar Water Pumping	Solar Queen Pump - Solar King Pump
16	Telecom	Hybrid Solar Wind - Solar Remote Telecom
18	Portable Solar	Solar UFO - Solar Cell Mate
20	Portable Solar	Solar Smart Light - Solar Base Camp
22	Portable Solar	Solar Flex Mate - Solar Mobile Mate
24	Portable Solar	Solar Vehicle Mate - Solar Remote Freezer
26	BOS	AC/DC Disconnects
28	BOS	Connectors and PV Wire
30	LED Lighting	Bulbs, Spotlights, Tubes, High Bays

info@symtechsolar.com

Complete system kit with Plug and Play configuration

Mounting System Solution

Symtech offers high quality anodized Al-6005TS mounting systems that are suitable for any roof type. Our mounting systems will reduce both man hours and installation costs. They are easy to install and provide adequate wind and load protection. Offered for a variety of different roof styles.



Wood Roof Connector

5kWp Residential PV Kit



Shipping Configuration



Packaging Solution



All Items shipped in 1 box



PV Module selection

On-Grid

Residential PV Kits

Superior Protection & Customization

Symtech PV kits rely on state of the art Mono or Polycrystalline modules and inverter technology. Simplified packaging allows for easy shipping and receiving to installation site. All necessary hardware and design instructions for installing the PV systems are included in the PV System Kit.

Features

- Complete system kit shipped in one box
- Fast installation
- Plug and play configuration
- UL and TUV Listed Modules and Inverters
- Optimized system footprint
- AC & DC disconnects
- Roof Mount System

Options

- Mono or Polycrystalline PV modules (Black/White)
- Flat/Pitched/Ground Mounting
- Wireless Monitoring
- 1.5kW, 2kW, 3kW, 4kW, and 5kW

Technical Characteristics

Product Name	HOME SAVER	HOME SAVER +	HOME PRO	HOME PRO +	HOME RUN
Part #	STSGT-1.5	STSGT-2	STSGT-3	STSGT-4	STSGT-5
System Size	1.5kW	2kW	3kW	4kW	5kW
# of Modules	6	8	12	16	20
Inverter Size	1.5	2	3	4	5
AC/DC Disconnect	1/1	1/1	1/1	1/2	1/2
PV Wire Harness (4mm 1000V)	2	2	2	4	4
Grounding Lugs	6	8	12	16	20
Orientation	Landscape or Portrait				
PV Array Surface Area (m2)	11	13	20	26	33
PV Array Weight (kg)	120	160	240	320	400
Projected yearly output (kWh/y)	1642.5	2190	3285	4380	5475
PV Kit Weight (kg)	230	280	380	480	580
Shipping Size (W/L/H) (m)	0.5/1.75/1	0.5/1.75/1	1/1.75/1	1/1.75/1	1.2/1.75/1

On-Grid

Commercial PV Kits

Superior Protection & Customization

Symtech PV system kits rely on state of the art Mono or Polycrystalline modules and inverter technology. Simplified packaging allows for easy shipping and receiving to installation site. All necessary hardware and design instructions for installing the PV systems are included in the PV System Kit.



Complete system kit with Plug and Play configuration

Commercial PV Kits

Symtech commercial PV Kits are suitable for larger available area size. They are the perfect solution for middle size projects which have bigger electricity demand than normal single houses. It's simplified packaging solutions has made them top favorite items for customers looking to save energy costs.

Features

- Simplified packaged solution
- Fast installation
- Plug and play configuration
- UL and TUV Listed Modules and Inverters
- Optimized system footprint
- AC & DC disconnects
- Roof Mount System/Ground Mount

Options

- Mono or Polycrystalline PV modules (Black/White)
- Flat/Pitched/Ground Mounting
- Wireless Monitoring
- 10kW, 20kW, and 45kW



45kWp Flat Roof PV

Shipping Configuration



Packaging Solution

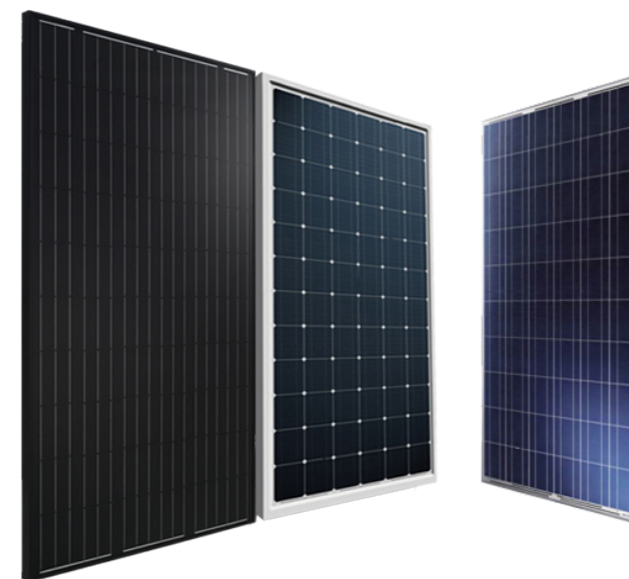


45kWp PV Array

Technical Characteristics

Product Name	Arena	Stadium	Coliseum
Part #	STSGTC-10	STSGTC-20	STSGTC-45
System Size	10kW	20kW	45kW
# of Modules	40	80	180
Inverter Size	2 x 5	2 x 10	3 x 15
AC/DC Disconnect	2/1	4/1	6/3
PV Wire Spool 4mm (m)	120	225	500
Grounding Lugs	40	80	180
Orientation	Landscape or Portrait		
PV Array Surface Area (m2)	80	160	360
PV Array Weight (kg)	1000	2000	4500
PV Kit Weight (kg)	1225	2355	5270
Projected yearly output (kWh/y)	10950	21900	49275

PV Module selection



20kWp PV Array



Off-Grid

Residential PV Kits

Stand Alone Systems

Symtech PV system kits rely on state of the art Mono or Polycrystalline modules and inverter technology. Simplified packaging allows for easy shipping and receiving to installation site. All necessary hardware and design instructions for installing the PV systems are included in the PV System Kit.



Grid Independent

Off-Grid PV Kits are designed for those who either have limited access to the grid or for those who want to be totally independent from it. These systems include a Smart Energy Management Unit (SEMU) and a battery bank that balances the energy loads with the PV array.

Features

- Simplified packaged solution
- Fast installation
- Plug and play configuration
- UL and TUV Listed Modules and Inverters
- Battery Bank
- AC & DC disconnects
- Roof Mount System

Options

- Mono or Polycrystalline PV modules (Black/White)
- Flat/Pitched/Ground Mounting
- Wireless Monitoring
- 2kW, 3kW and 6kW

Technical Characteristics

Product Name	Remote Home Saver	Remote Home Pro	Remote Home Run
Part #	STSOG-2	STSOG-3	STSOG-6
System Size	2kW	3kW	6kW
# of Modules	8	12	24
Inverter Size	2	3	6
PV Wire Harness 4mm/20m	4	8	16
Grounding Lugs	8	12	24
Orientation	Landscape or Portrait		
PV Array Surface Area (m2)	16	24	48
PV Array Weight (kg)	200	295	600
Battery Bank	24V 450Ah	48V 400Ah	48V 800Ah
AC Output	120v/230V	120v/230V	120v/230V



Simplified Packing Solution

Off Grid Energy Management Unit

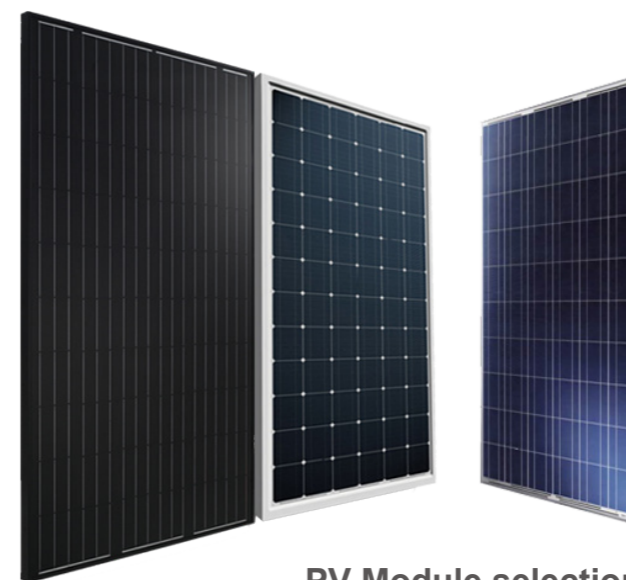


Flex Power One



2kW Off-Grid PV

Off-Grid Residential



PV Module selection

Complete system kit with Plug and Play configuration

Grid Independent

The Remote Micro Home systems from Symtech Solar are small off-grid solutions for the off-grid residential market. They are Designed for smaller load requirements. Available in different configurations.



Off-Grid Outdoor Cabin

2.5kW Off-Grid PV



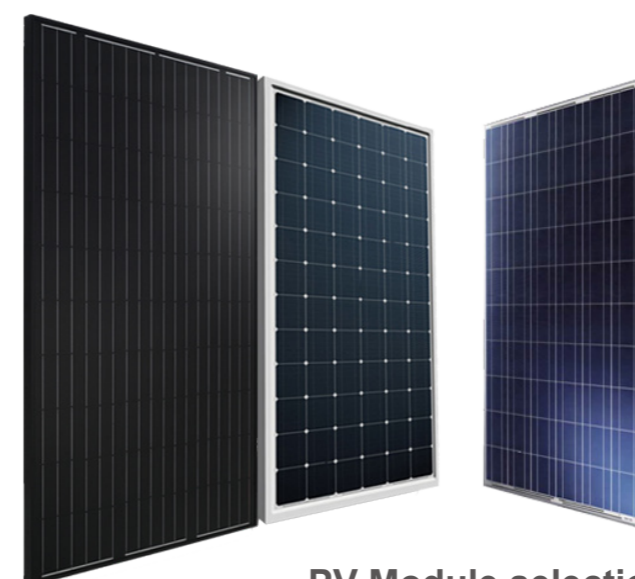
EMU Configuration



Off-Grid Inverter / Charge Controller



Simplified Packing Solution



PV Module selection

Off-Grid

Micro Home

Stand Alone Systems

Symtech PV system kits rely on state of the art Mono or Polycrystalline modules and inverter technology. Simplified packaging allows for easy shipping and receiving to installation site. All necessary hardware and design instructions for installing the PV systems are included in the PV System Kit.

Features

- Simplified packaged solution
- Fast installation
- Plug and play configuration
- UL and TUV Listed Modules and Inverters
- Optimized system footprint
- AC & DC disconnects
- Roof Mount System

Options

- Mono or Polycrystalline PV modules (Black/White)
- Flat/Pitched/Ground Mounting
- Wireless Monitoring
- 1.5kW, 2kW, 3kW, 4kW, and 5kW

Technical Characteristics

Product Name	Remote Micro Home	Remote Micro Home +
Part #	STSOG-500	STSOG-1000
System Size	500W	1000W
# of Modules	2	4
Pure Sine Wave Inverter Size	500	1000
AC/DC Disconnect	1/1	1/1
PV Wire Harness (4mm 1000V)	2	2
Grounding Lugs	2	4
Orientation	Landscape or Portrait	
PV Array Surface Area (m2)	4	8
PV Array Weight (kg)	40	80
Battery Bank	24V 200Ah	24V 400Ah
AC Output	120V/230V	120V/230V



Typical Applications

- Gardens
- Ponds
- Livestock
- Aquaculture
- Water storage

Features & Benefits

- Easy installation
- Eliminates the need for diesel generators
- Float switch for better control
- MPPT Max Power Point Tracking
- Operates autonomously

Technical Information

	SOLAR MODULE	WATER PUMP	CONTROLLER
Power (W)	1000	370	750
Space Required (m2)		6-7	
Weight (kg)		54	
DC Output Voltage (V)	18	220	280 - 350
Water Head (m)		20 - 29	
Water Flow (m3/day)		10 - 20	



SOLAR Pump Jack 1 kW

Product Details

The Solar Pump Jack is the smallest commercial “all in-one” solar water pumping kit offered by Symtech. The SPJ1000 utilizes a 3 phase AC pumping system for enhanced efficiency and increased pump life, aluminum mounting system and mono PV technology. The ideal solution for light irrigation projects that want to utilize clean renewable energy from the sun.

Typical Applications

- Livestock watering
- Irrigation ponds
- Remote communities
- Aquaculture
- Water storage

Technical Information

	SOLAR MODULE	WATER PUMP	CONTROLLER
Power (W)	250	150	200
Space Required (m2)		2	
Weight (kg)		54	
DC Output Voltage (V)	30.7	24	24
Water Head Max (m)		30	
Water Flow Max (m3)		0.7m3/hour or 2.8m3/day	



Part # STSWP-1

Part # STSWP-2

Solar Water Pumping

SOLAR Garden Pump 0.25 kW

Product Details

The Solar Garden Pump is the smallest solar water pumping kit offered by Symtech. The SGP200 provides a complete off-grid independent water pump system that’s simple to use and easy to install. Pump float switch makes control simple and worry free. Perfect for small irrigation projects and ponds.

Features & Benefits

- Easy installation
- Simple design
- Float switch for better control
- Brass & stainless steel design
- Operates autonomously

Technical Information

	SOLAR MODULE	WATER PUMP	CONTROLLER
Power (W)	250	150	200
Space Required (m2)		2	
Weight (kg)		54	
DC Output Voltage (V)	30.7	24	24
Water Head Max (m)		30	
Water Flow Max (m3)		0.7m3/hour or 2.8m3/day	



Part # STSWP-1

Solar Water Pumping

SOLAR Pump Queen 2.5 kW

Product Details

The Solar Pumping Queen is designed for mid sized water irrigation projects and is the perfect solution for the livestock industry or areas that rely on a dedicated water supply that utilizes pumping. The ideal solution for saving precious resources by utilizing unlimited solar energy.

Features & Benefits

- Easy installation
- Eliminates the need for diesel generators
- Float switch for better control
- MPPT Max Power Point Tracking
- Operates autonomously

Technical Information

	SOLAR MODULE	WATER PUMP	CONTROLLER
Power (W)	2500	1500	2200
Space Required (m2)		20	
Weight (kg)		345	
DC Output Voltage (V)	30.7	220	280 - 350
Water Head (m)		27 - 43	
Water Flow (m3)		20 - 40	



Typical Applications

- Livestock watering
- Irrigation ponds
- Remote communities
- Aquaculture and farming
- Water storage

Part # STSWP-3



SOLAR Pump King 8.5 kW

Product Details

The Solar Pumping King is the largest off-grid solar energy water pumping solution from Symtech. Ideal for irrigation projects and municipalities looking for a cheaper and more environmentally friendly pumping system.

Typical Applications

- Livestock watering
- Irrigation ponds
- Remote communities
- Aquaculture and farming
- Water storage

Features & Benefits

- Easy installation - ground mounted array
- Eliminates the need for diesel generators
- Float switch for better control
- MPPT Max Power Point Tracking
- Quiet operation

Technical Information

	SOLAR MODULE	WATER PUMP	CONTROLLER
Power (W)	8500	5500	7500
Space Required (m2)		60	
Weight (kg)		1050	
DC Output Voltage (V)	30.7	220	500 - 600
Water Head (m)		44 - 67	
Water Flow (m3)		60 - 100	



Part # STSWP-4



Telecom

HYBRID Solar Wind 3.5 kW

Product Details

The remote Telecom solar kit from Symtech includes all the products required for an efficient and reliable 24 hour remote power source. Designed around an optimal system footprint with expandable energy storage options to fit a variety of different energy requirements.



SOLAR Remote Telecom

Product Details

The remote Telecom hybrid solar kit from Symtech includes all the products required for an efficient and reliable 24 hour remote power source. Utilizing state of the art technology in both solar PV and Wind Power this kit offers dual energy generation units.

Solar

- Mono or Polycrystalline PV modules (Black/White)
- Flat/Pitched/Ground Mounting options
- Wireless monitoring

Wind

- Permanent magnet synchronous generator
- Nylon composite blades
- Independent EMU



Features & Benefits

- Low Maintenance
- Excellent performance
- Cut diesel or imported fuel costs
- Dramatically cut installation time

Options

- Mono or Polycrystalline PV modules (Black/White)
- Flat/Pitched/Ground Mounting
- Wireless monitoring



Technical Information

Part # STSHT-3.5	SOLAR MODULE	INVERTER/CHARGER	BATTERY	WIND TURBINE
Power (W)	2500	2500	24V @ 900Ah	1000
Space Required (m)	20m2	1 x 0.6 x 0.45	2.5 x 0.4 x 0.35	1.8 m x 15m
Weight (kg)	1150			
Quantity	10	1	24	1
DC Output Voltage (V)	30.5	24	24	24
DC Output Current (A)	8.2	20	900Ah	40

Technical Information

Product Name	Remote Tele 2	Remote Tele 3	Remote Tele 4
Part #	STSOGT-2	STSOGT-3	STSOGT-6
System Size	2kW	3kW	6kW
# of Modules	8	12	24
Inverter Size (kW)	2	3	6
PV Wire Harness 4mm/20m	4	8	16
Grounding Lugs	8	12	24
Orientation	Landscape or Portrait		
PV Array Surface Area (m2)	16	24	48
PV Array Weight (kg)	200	295	600
Battery Bank	24V 450Ah	48V 400Ah	48V 800Ah
AC Output	120v/230V	120v/230V	120v/230V

Portable Solar

SOLAR UFO

2 WATT



SOLAR Cell Mate

5 WATT

Product Details

The solar Cell Mate is an ultra portable 5 Watt solar battery solution designed for those needing power for their mobile devices. Perfect for the active hiker or backpacker who wants to stay powered up.

Typical Applications

- Mobile Phones
- Tablets
- MP3 Players
- Cameras
- Small electronic gadgets

Product Details

The solar UFO is the smallest portable solar, battery, and light combination offered from Symtech Solar. Its super compact and packable design make it easy to carry for both camping and quick backup lighting situations. Makes a great gift!

Features & Benefits

- Portable solar, battery, light combination
- 12 compact LED bulbs
- NI-MH rechargeable batteries (replaceable)
- Out of this world design
- Hangable eye hook design

Typical Applications

- Emergency lighting
- Camping
- Camps and patios
- Parties
- Outdoor events

Features & Benefits

- Portable solar and battery combination
- 50Wh Li-Ion Polymer battery capacity
- Dual USB output
- Water resistant solar module
- Auto sync from solar and battery

Technical Information

	SOLAR MODULE	BATTERY
Power (W)	5	5000mAh
Size (mm)	204 x 282 x 12.5	125 x 70 x 15.6
Weight (g)	300	200
Charge Time (hrs)		3 - 5
DC Output Voltage (V)	5.5	5
DC Output Current (mA)	910	2

Technical Information

	SOLAR MODULE	BATTERY	LED LIGHTS
Power (W)	2	1200mAh	1.5
Size (mm)		11.5 x 3	
Weight (g)		200	
Charge Time (hrs)		3-5	
DC Output Voltage (V)	3	2.4	N/A
DC Output Current (mA)	660	1200	N/A



Part # STSP-2L



Part # STSP-5CH



Portable Solar

SOLAR Smart Light

8 WATT

Product Details

The SOLAR Home Light from Symtech offers a fast, simple and economic solution for those looking at portable lighting unit. Perfect for mounting on patios, campers, sheds, or any shelter without electricity.

Features & Benefits

- Lightweight design
- Ergonomic and portable
- Adjustable angle bracket
- Phone charging outlet with wire
- Pull on/off switch

Technical Information

	SOLAR MODULE	BATTERY	ADDITIONAL ACCESSORIES
Power (W)	8	29Wh	
Size (mm)	380 x 220 x 165		• 3 Watt SMD LED
Weight (kg)	2		• Rechargeable L-Ion
Charge Time (hrs)	8		• Wiring Cable (5m)
DC Output Voltage (V)	6	3.7	
DC Output Current (A)	1.3	8	



Typical Applications

- 2nd Homes
- Camps and sheds
- Rural off-grid communities
- Emergency lighting
- General lighting and phone charging



Part # STSP-8L

Features & Benefits

- Lightweight design
- Ergonomic for portability
- 4 LED lights with sockets
- Mobile phone charging capability
- Multiple plug adaptors

Technical Information

	SOLAR MODULE	BATTERY	ADDITIONAL ACCESSORIES
Power (W)	15	90Wh	
Size (mm)	405 x 345 x 131		• 4 LED Lights 2 Watts
Weight (kg)	7.9		• Accessory Cable
Charge Time (hrs)			• Wiring Cable
DC Output Voltage (V)	17	12	
DC Output Current (A)	0.58	7	



Part # STSP-15L

SOLAR Base Camp

15 WATT

Product Details

The SOLAR Base Camp system from Symtech offers a simple and economic solution for off-grid lighting. This kit comes complete with solar panel, battery, charging unit, wires and 4 bulb & sockets. This portable kit can be set up for use in minutes.

Typical Applications

- Rural off-grid communities
- 2nd Homes
- Camps and sheds
- Emergency lighting
- General lighting and phone charging



Portable Solar

SOLAR Flex Mate

20 WATT



SOLAR Mobile Mate

20 WATT

Product Details

The SOLAR Mobile Mate is a 20 Watt foldable solar battery solution designed around the active lifestyle or those looking for power in a plug free environment. Great on the go power supply for taking to the park or on your next outdoor adventure. SOLAR Mobile Mate is quick and easy to setup and use for a variety of different mobile applications.

Typical Applications

- Computers
- Mobile phones
- Cameras
- MP3/MP4 Players
- PDA's

Product Details

The SOLAR Flex Mate 20 Watt foldable solar battery solution is a simple and convenient portable power supply for on the go people or those looking to keep their mobile electronic devices powered up. A 20 Watt monocrystalline PV module easily connects to the Li-Ion battery pack for charging your favorite electronic gadget.

Features & Benefits

- Portable solar and battery combination
- 60Wh Li-Ion battery capacity
- USB compatible
- Indicator LED for charging
- Adjustable output voltage

Typical Applications

- Computers
- Mobile phones
- Cameras
- MP3/MP4 Players
- PDA's

Features & Benefits

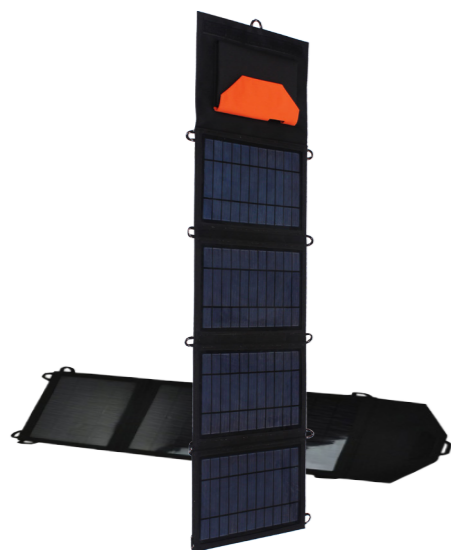
- Portable solar and battery combination
- 60Wh Li-Ion battery capacity
- USB compatible
- Indicator LED for charging
- Adjustable output voltage

Technical Information

	SOLAR MODULE		BATTERY
Power (W)	20		60Wh
Size (mm)	835 x 275 x 15 (unfolded)	210 x 275 x 45 (folded)	170 x 85 x 25
Weight (g)	950		420
Charge Time (hrs)	3 - 5		
DC Output Voltage (V)	12	Selectable 8.4 - 12 - 16 - 19	
DC Output Current (mA)	1670	4000	

Technical Information

	SOLAR MODULE		BATTERY
Power (W)	20		60Wh
Size (mm)	200 x 290 x 50 (folded)	400 x 620 x 35 (unfolded)	170 x 85 x 25
Weight (g)	950		420
Charge Time (hrs)	3 - 5		
DC Output Voltage (V)	12	Selectable 8.4 - 12 - 16 - 19	
DC Output Current (mA)	1670	4000	



Part # STSP-20F



Part # STSP-20B



Portable Solar

SOLAR Vehicle Mate 100 WATT



Product Details

The solar vehicle mate is designed with the motorist in mind. Simple suitcase design with adjustable mounting bracket and easy to carry handle makes charging your vehicles battery that much easier. Built in charge controller with convenient crocodile and cigar lighter adapter included.

Features & Benefits

- Lightweight design
- Ergonomic for portability
- Adjustable angle bracket
- Indicator LED for charging
- Multiple plug adaptors

Typical Applications

- Cars & Trucks
- RV's
- Boats
- Small Camps
- 12 Volt battery banks

Technical Information

	SOLAR MODULE	CHARGE CONTROLLER
Power (W)	100	100
Size (mm)	664 x 668 x 70	
Weight (kg)	8	
Charge Time (hrs)	2 or more hours depending on battery (Ah) size	
DC Output Voltage (V)	18	14.7
DC Output Current (A)	5.55	



Part # STSP-100A

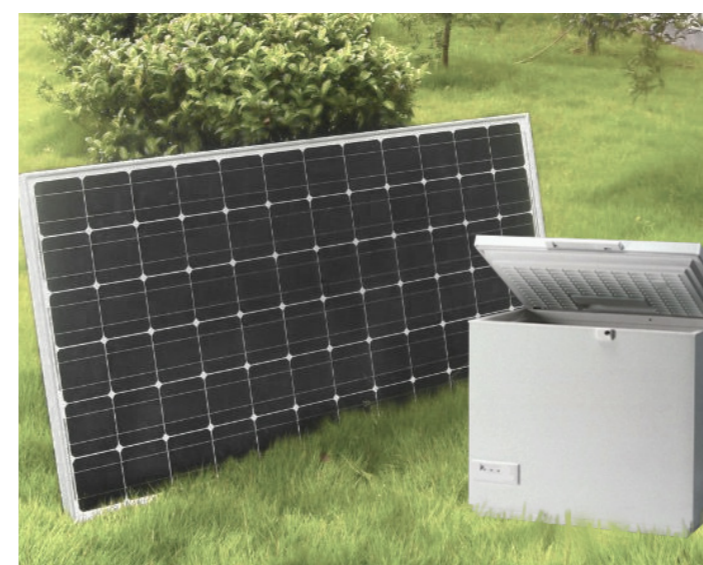


Features & Benefits

- Quick installation & cost effective
- Energy efficient design (R-134a refrigerant)
- Lockable lid
- Adjustable thermostat
- Ample solar and battery back up

Technical Information

	SOLAR MODULE	CHARGE CONTROLLER	BATTERY	FREEZER
	250	520Wh	200Ah	168Whs
Size (mm)	1650 x 992 x 40	170 x 120 x 85	322 x 178 x 225	1000 x 750 x 950
Weight (kg)	273			
Quantity	1	1	2	1
DC Output Voltage (V)	30.5	24	24	24
DC Output Current (A)	8.2	20	200	23 Ah/day



SOLAR Remote Freezer 0.25kW

Product Details

The Remote Freezer system from Symtech Solar is a turnkey freezer (165 liter) kit perfect for remote cabins or areas without access to the grid. Chest style freezers are easy to clean and optimize with a thick insulation and a refrigeration system designed for solar PV applications. Freezer Kit includes everything required to set up and begin use in less than one hour.

Typical Applications

- Second homes
- Camps and cabins
- Remote island communities
- Off-grid medical storage
- Perishables



Part # STSP-2-24

BOS Components

PV Solutions Components

Symtech offer some of the most common solar energy components used for the installation of residential and light commercial solar project for both on and off-grid systems. All components comply with the relevant local codes and standards.

If you require a component that is not shown in this catalogue, please contact our sales staff, who will happily assist you with your enquiry.



Options

The protection and isolation of DC circuits is a critical part of the overall PV system. There are a number of options available for installers, depending on an array of factors including:

- system size (module, string and inverter)
- site layout (rooftop, ground mount, BIPV)
- system design (local code requirements)
- visual aesthetics (component placement)

AC Disconnect

Part Number	STS-AC-16	STS-AC-25
Max AC Voltage (VAC)	415	415
Max AC Current (A)	16	25
Rating	IP65	
Size (mm)	118 x 84 x 10	

Features

- Large pad lockable red/yellow or grey/black handle
- High breaking capacity with 12.5 mm contact air gap
- Compact and suitable where space is limited

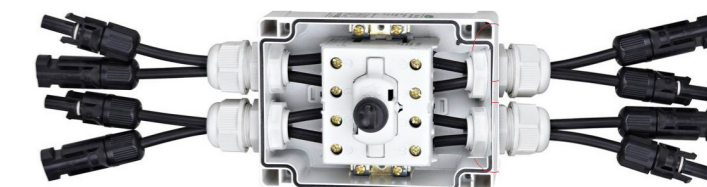


Dual DC Disconnect

Part Number	STS-DCCT-20	STS-DCCT-32
Max AC Voltage (VAC)	1000	1000
Max AC Current (A)	20	32
Rating	IP65	
Size (mm)	118 x 84 x 10	

Features

- Large pad lockable red/yellow or grey/black handle
- Optional MC4 connectors
- Compact and suitable where space is limited
- Flame retardant ROHS polycarbonate



DC Disconnect

Part Number	STS-DC-16	STS-DC-25
Max DC Voltage (VDC)	1000	1000
Max DC Current (A)	16	25
Rating	IP65	
Size (mm)	118 x 84 x 10	

Features

- Large pad lockable red/yellow or grey/black handle
- Optional MC4 connectors
- Compact and suitable where space is limited
- Highly visible red/yellow handle



AC/DC Disconnect

Part Number	STS-ACDC-25	
Max Voltage (V)	230AC	1000DC
Max Current (A)	15AC	16DC
Rating	IP65	
Size (mm)	200 x 200 x 98	

Features

- AC/DC integrated switch
- IP66 UV stabilized
- Independent lockable lids
- SSPD surge protection



BOS Components

PV Solutions Components

MC4 solar connectors and accessories provide a fast and reliable connection for Solar energy projects up to 1000VDC, and are easily crimped and assembled with dedicated MC4 crimping tools.

If you require a component that is not shown in this catalogue, please contact our sales staff, who will happily assist you with your enquiry.



MC4 Connectors (pairs)

Part Number	STS-MC4-30	STS-MC4-43
Max AC Voltage (VAC)	1000	1000
Max AC Current (A)	30	43
Rating	IP67	
Resistance (mΩ)	0.5	

Features

- Over molded design w/ fast and easy crimp assembly
- Certified to TUV & UL standards
- Mechanical lock and release clip design



MC4 Branch Connectors

Part Number	STS-MC4B-M	STS-MC4B-F
Max DC Voltage (VDC)	1000	1000
Max DC Current (A)	30	30
Rating	IP67	
Resistance (mΩ)	0.5	

Features

- Over molded design
- Certified to TUV & UL standards
- Simple plug and play design
- Waterproof IP67 rating



Home Runs (Wiring Harness)

Part Number	STS-PVWH-20	STS-PVWH-25
Max AC Voltage (VAC)	1000	1000
Max AC Current (A)	20	32
Resistance (Ω/km)	4.75	
Size (L x W)	20m x 4mm	25m x 4mm

Features

- Robust, flexible and space-saving design
- UV resistant
- Flame retardant insulation
- Black, red, or blue colors available

Solar Wire

Part Number	STS-PVW4-100	STS-PVW6-100
Max Voltage (V)	1000	1000
Max Current (A)	55	70
Resistance (Ω/km)	4.75	3.39
Size (L x W)	100m x 4mm	100m x 6mm

Features

- Flame retardant insulation
- Robust, flexible and space-saving design
- Highly temperature resistant
- Black, red, or blue colors available

Design Criteria

Pre-assembled wire harnesses are a quick and easy alternative to crimping your own connections in the field. Pre-assembled MC4- harnesses can minimize the risk of faulty and unsafe connections, as well as reducing the installation time of a project.

Custom lengths and sizes upon request based on:

- Wire length (m)
- Wire size (mm)
- Wire Color

